



HENRY WALKER
H O M E S™

QUICK MOVE-IN HOME

\$479,990

Eaglewood Village 315- Willow B



Gorgeous new home under construction! To be completed spring 2017. This craftsman home sits on an amazing south-facing lot with stunning views. The large/open kitchen, dining room and family room make this a perfect home for entertaining both family and friends. Tile flooring in all bathrooms, fireplace in the great room, 4 bedrooms & laundry on the upper level, 3-car garage, and a large unfinished basement where 3 bedrooms, 1 bath, & large family room can easily be added as your family grows.

This community represents a superb example of what makes Wasatch Front living so enticing. Situated along the Wasatch Mountains and just 10 minutes from downtown Salt Lake City, Eaglewood Village offers the perfect combination of location and family-friendly lifestyle. Live just around the corner from Eaglewood Golf Course and Mueller Park, a woodland ecosystem traversed by a 13-mile backcountry trail. Imagine sitting on the back deck of your beautiful new home soaking in the dramatic mountain and cityscape views.

801-335-3731

HenryWalkerHomes.com

HENRY WALKER HOMES
1148 W. Legacy Crossing Blvd, Suite 400
Centerville, UT 84014



Willow

4,173 Total Sq. Ft.
2,874 Finished Sq. Ft.

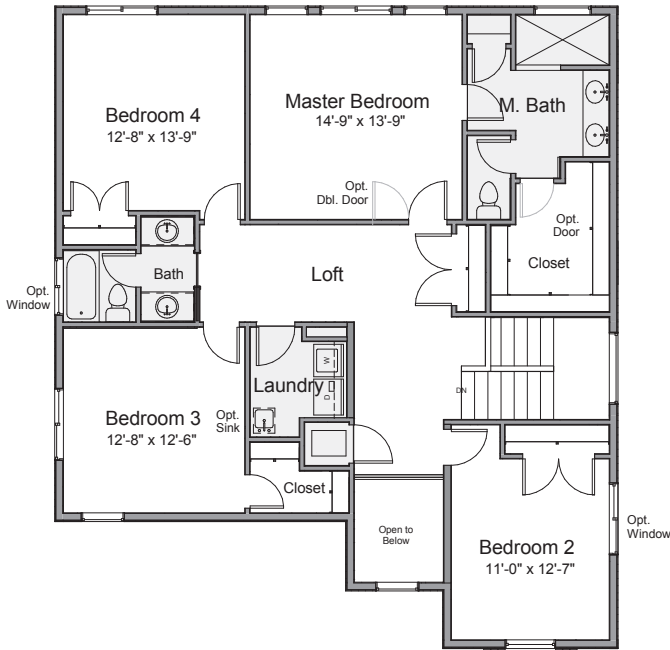
Bedrooms

 Bathrooms

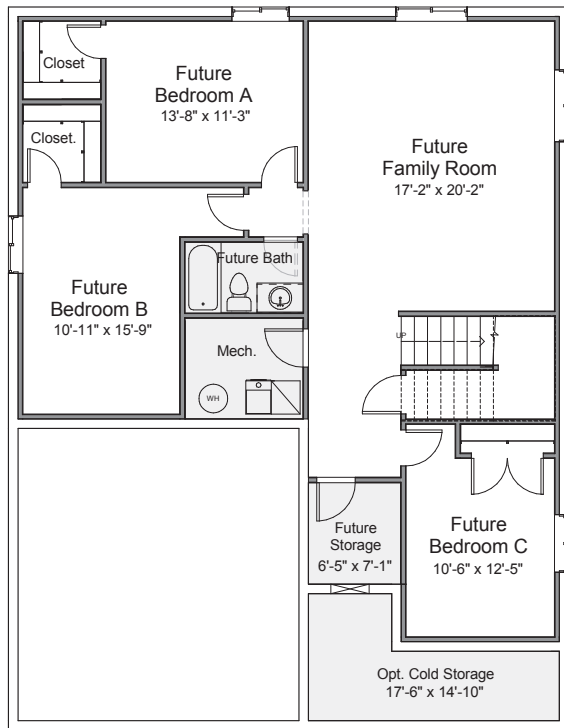
 Garage

= Included
 = Optional

Upper Level



Basement Level



Main Level

