



HENRY WALKER
H O M E S™

QUICK MOVE-IN HOME

Old Farm at Parkway #307

799 W Farming Way (800 S) - Layton

Birch B

\$425,000

NOT ACTUAL PHOTOS OF HOME

These are photos of the same floor plan



This gorgeous two-story home sits on an amazing .20 acre lot. The large/open kitchen, dining room and family room make this a perfect home for entertaining both family and friends. Tile flooring in all bathrooms, fireplace in the great room, 4 bedrooms & laundry on the upper level, 2-car garage with extension, and an unfinished basement where 2 bedrooms, 1 bath, & family room can easily be added as your family grows. Same floor plan as the model home.

801-335-3731

HenryWalkerHomes.com

HENRY WALKER HOMES
1148 W. Legacy Crossing Blvd, Suite 400
Centerville, UT 84014

See reverse side for floor plan.



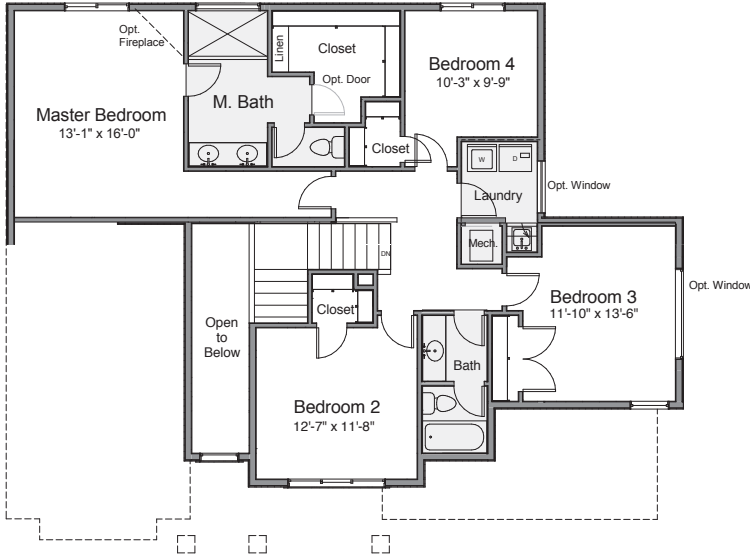
Birch

3,612 Total Sq. Ft.
2,425 Finished Sq. Ft.

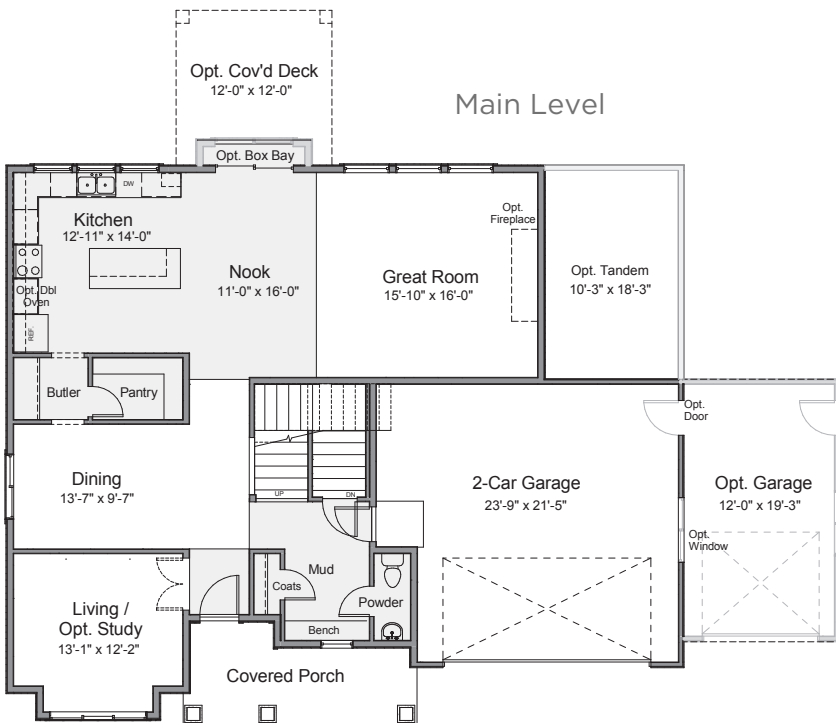
- ■ ■ □ □ □ Bedrooms
- ■ ■ □ Bathrooms
- ■ □ Garage

■ = Included □ = Optional

Upper Level



Main Level



Basement Level

