



HENRY WALKER
H O M E S™

QUICK MOVE-IN HOME

Old Farm at Parkway #314

776 W Abbey Way (850 S) - Layton

Birch B

\$399,990



This gorgeous two-story home sits on an amazing .20 acre south-facing lot. The large/open kitchen, dining room and family room make this a perfect home for entertaining both family and friends. Tile flooring in all bathrooms, fireplace in the great room, 3 bedrooms & laundry on the upper level, 3-car garage, and an unfinished basement where 2 bedrooms, 1 bath, & family room can easily be added as your family grows. Same floor plan as the model home.

801-335-3731

HenryWalkerHomes.com

HENRY WALKER HOMES
1148 W. Legacy Crossing Blvd, Suite 400
Centerville, UT 84014

See reverse side for floor plan.



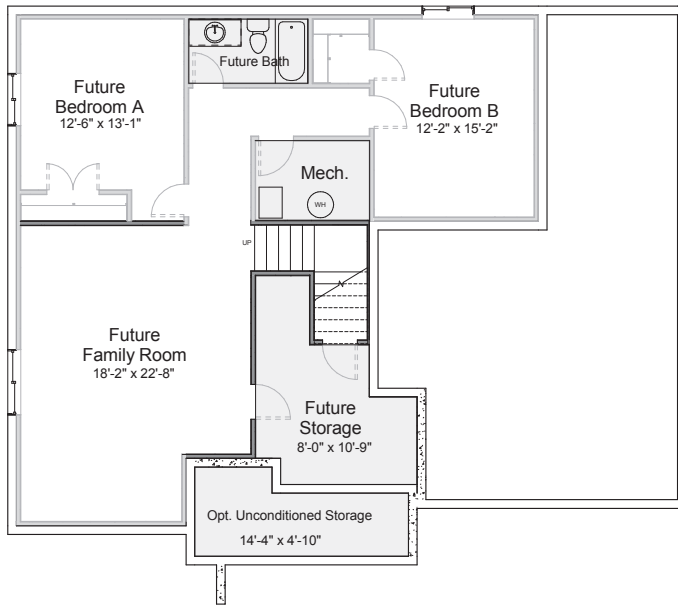
Birch

3,612 Total Sq. Ft.
2,425 Finished Sq. Ft.

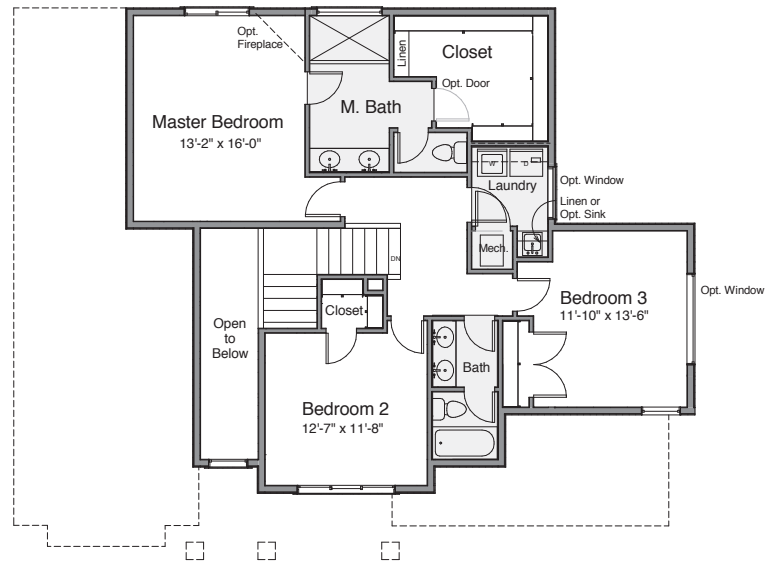
- ■ ■ □ □ □ Bedrooms
- ■ ■ □ Bathrooms
- ■ ■ Garage

■ = Included □ = Optional

Basement Level



Upper Level



Main Level

