



HENRY WALKER
H O M E S™

QUICK MOVE-IN HOME

Eaglewood Village 314 - Nabella C

\$427,469

MLS# 1455626



This community represents a superb example of what makes Wasatch Front living so enticing. Situated along the Wasatch Mountains and just 10 minutes from downtown Salt Lake City, Eaglewood Village offers the perfect combination of location and family-friendly lifestyle. Live just around the corner from Eaglewood Golf Course and Mueller Park, a woodland ecosystem traversed by a 13-mile backcountry trail. Imagine sitting on the back deck of your beautiful new home soaking in the dramatic mountain and cityscape views.

801-335-3731

HenryWalkerHomes.com

HENRY WALKER HOMES
1148 W. Legacy Crossing Blvd, Suite 400
Centerville, UT 84014

See reverse side for floor plan.

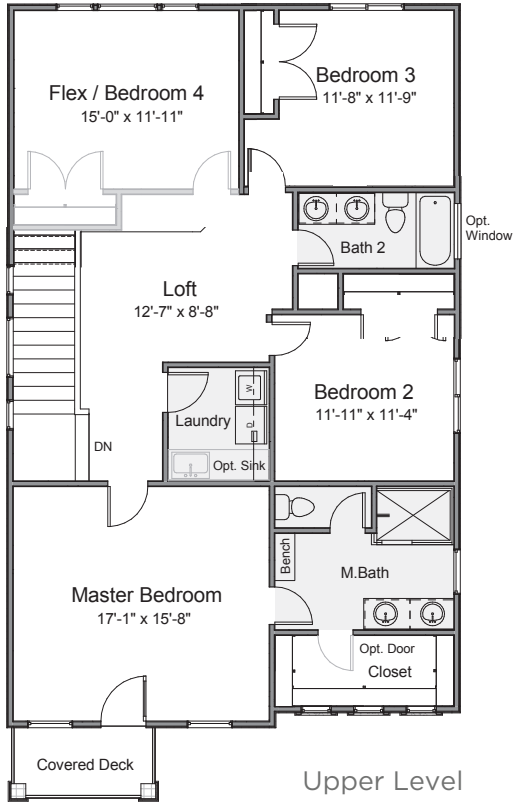


Nabella

3,153 Total Sq. Ft.
2,303 Finished Sq. Ft.

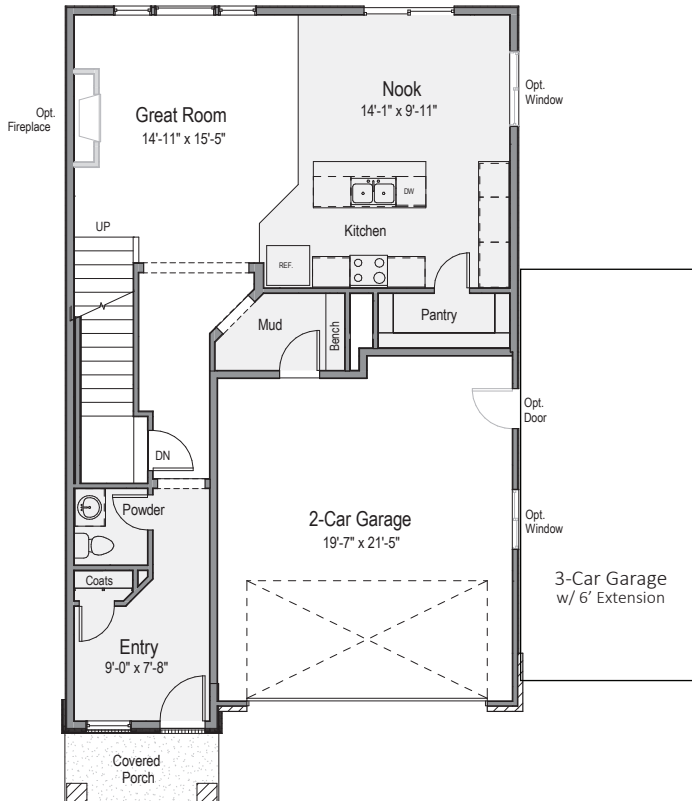
- ■ ■ ■ □ Bedrooms
- ■ ■ □ Bathrooms
- ■ ■ Garage

■ = Included □ = Optional



Upper Level

Main Level



Basement Level

